



TUF-FIX

PROFESSIONAL

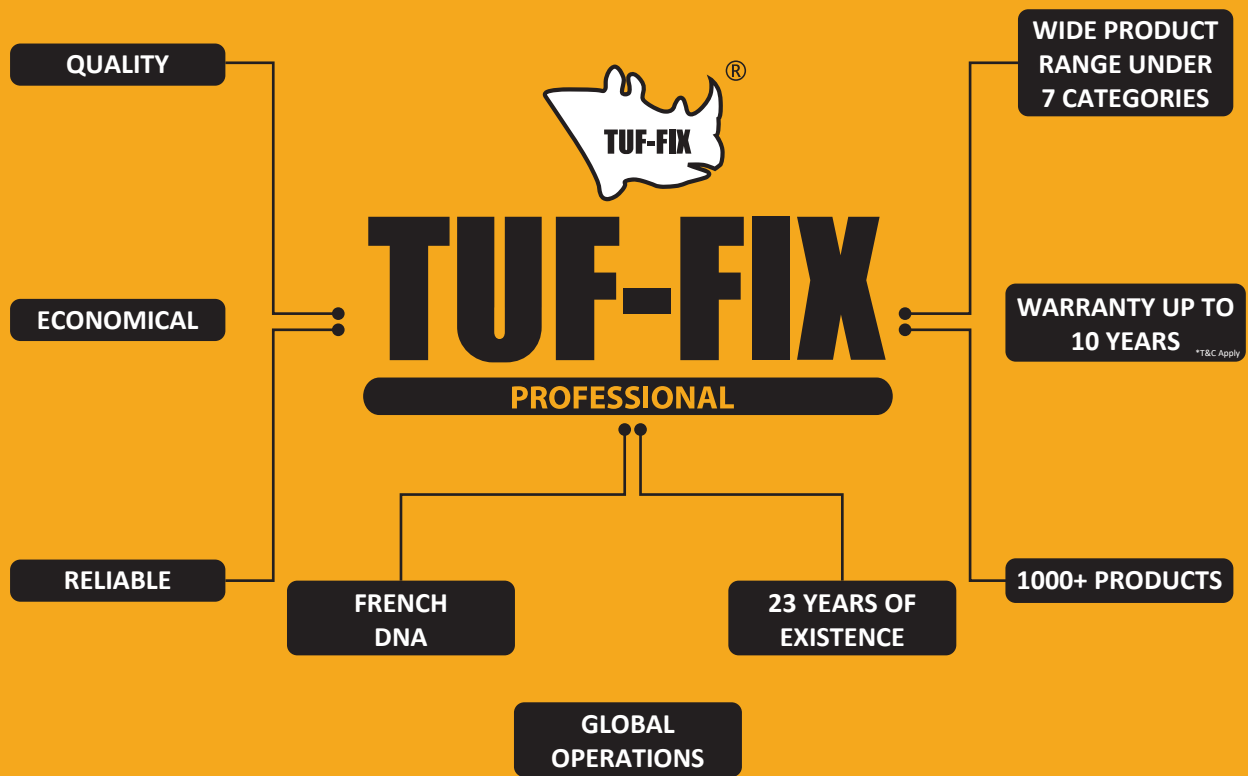
SINCE 1996



HAND TOOLS CATALOGUE 2020



THE PROMISE OF QUALITY, ECONOMY AND RELIABILITY



TUF-FIX brand, established in 1996 is one of the fastest growing brands in the building materials and tools industry in the global market. Based in France, its core focus is on hand tools, fasteners & fixings, painting tools, locks, industrial safety equipment's, welding, and general tools. The complete range of TUF-FIX products can be seen at its website www.tuffix.com.

TUF-FIX brand is synonymous with innovation, reliability and safety in the development of industrial related products all over the globe. Its market strength lies in being the only Single-Brand today in the local markets with such a wide range of products in its product portfolio. This strength not only offers multiple application solution to its end-users but it also provides an opportunity to its trade partners to maximize their revenues by focusing and synergizing their efforts on a single brand.

TUF-FIX is upholding the most premium European quality at economical prices. Our quality regulation are extremely reliable across the TUF-FIX range, as we put our products through the toughest testing conditions in order to meet the highest standards.

SINCE 1996

MEASURING AND LAYOUT TOOLS

High Impact Tapes	3
Rubber Grip Tapes	3
Classic Tapes	4
Fiber Glass Blade Long Tapes	4
Professional Magnetic Levels	5
High Impact Magnetic Levels	5
Standard Megnetic Levels	6
Torpedo Levels	6
Carpenter's Steel Square	7
Try Square- Aluminium Handle	7
Combination Square	7
Steel Ruler	8
Chalk Line Set and Powders	8

KNIFE AND BLADES

Retractable Utility Knife	9
Self Retracting- Safety Utility Knife	9
Utility Knife Blades	9
Snap-off Knives	10
Safety Snap-off Knife	10
Pocket Knife	10
Snap-off Knife Blades	11
Window Scraper	11

WOOD CHISELS

TPR Grip Wood Chisels	12
-----------------------	----

SCREW DRIVERS

TPR Grip Screw Drivers	13
Screw Driver Set	13

WRENCHS

Adjustable Wrench	13
-------------------	----

SNIPS AND PLIERS

Aviation Snips	14
End Cutters	15
Combination Pliers	15
Long Nose Pliers	15
Diagonal Pliers	15
Water Pump Pliers	16
Locking Pliers	16

RIVETERS

HAND RIVETER	16
HEAVY DUTY FOLDING RIVETER	16

HAMMERS

Claw Hammers	17
Machinist Hammers	17
Chipping Hammers	18
Ball Pein Hammers	18
Sledge Hammer	19
Rubber Mallets	19

STORAGE

5 Tray Metal Tool Box	20
-----------------------	----

SINCE 1996

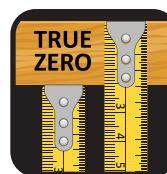
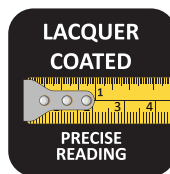
HIGH IMPACT TAPES

- High impact chrome plated ABS case for long life.
- Lacquer coated blade.
- Precision class II
- Hook with real zero position and with three rivets.
- High standout.
- Better wear resistance.
- Imperial & metric consecutive for easy measurement calculation.
- High performance spring.



SKU	Description	EAN
THT1011603	3M/E x 16mm Metric / Imperial	6901910116031
THT1011905	5M/E x 19mm Metric / Imperial	6901910119056
THT1012505	5M/E x 25mm Metric / Imperial	6901910125057
THT1012508	8M/E x 25mm Metric / Imperial	6901910125088
THT1012510	10M/E x 25mm Metric / Imperial	6901910125101

Blade width	Horizontal Stand-out	Vertical Stand-out
16mm	1.6m	2.2m
19mm	2.0m	2.7m
25mm	2.5m	3.8m



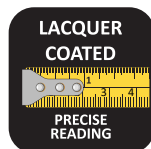
RUBBER GRIP TAPES

- Lacquer coated blade.
- Impact resistant rubberized case.
- Precision class II
- Hook with real zero position and with three rivets.
- High standout.
- Better wear resistance.
- Imperial & metric consecutive for easy measurement calculation.
- High performance spring.



SKU	Description	EAN
THT1031603	3M/E x 16mm Metric / Imperial	6901910316035
THT1031905	5M/E x 19mm Metric / Imperial	6901910319050
THT1032508	8M/E x 25mm Metric / Imperial	6901910325082
THT1032510	10M/E x 25mm Metric / Imperial	6901910325105

Blade width	Horizontal Stand-out	Vertical Stand-out
16mm	1.6m	2.2m
19mm	2.0m	2.7m
25mm	2.5m	3.8m



SINCE 1996

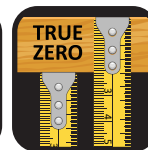
CLASSIC TAPES

- Lacquer coated blade.
- Precision class II
- Hook with real zero position and with three rivets.
- High stand-out.
- Better wear resistance.
- Imperial & metric consecutive for easy measurement calculation.



SKU	Description	EAN
THT1021603	3M/E x 16mm Metric / Imperial	6901910216038
THT1022505	5M/E x 25mm Metric / Imperial	6901910225054
THT1022508	8M/E x 25mm Metric / Imperial	6901910225085

Blade width	Horizontal Stand-out	Vertical Stand-out
16mm	1.6m	2.2m
19mm	2.0m	2.7m
25mm	2.5m	3.8m



FIBER GLASS BLADE - LONG TAPES

- High Impact ABS case for durability.
- Reinforced fiber glass blade for accurate measurements.
- Clear graduations- easy to read in all conditions.
- Quick rewind.
- Better wear resistance.
- Imperial & metric consecutive for easy measurement calculation.



SKU	Description	EAN	Case Type
THT1112020	20M Metric / Imperial	6901911120204	Closed Case
THT1112030	30M Metric / Imperial	6901911120303	Closed Case
THT1112050	50M Metric / Imperial	6901911120501	Closed Case
THT1119100	100M Metric / Imperial	6901911191006	Open Case

SINCE 1996

PROFESSIONAL MAGNETIC LEVELS

- Heavy duty aluminium frame.
- Machined on bottom surface for maximum accuracy.
- Shock proof and UV Protected high visible vials.
- Shock absorbing end caps to protect the accuracy of level if accidentally dropped.
- Accuracy +/- 0.5mm/m
- One Level and one plumb vial for wide range of jobs.
- Hang hole simplifies storage.



SKU	Size	Vials	EAN
THT2114030	30cm	2	6901921140308
THT2114045	45cm	2	6901921140452
THT2114060	60cm	2	6901921140605
THT2114100	100cm	3	6901921141008
THT2114120	120cm	3	6901921141206
THT2114150	150cm	3	6901921141503
THT2114180	180cm	3	6901921141800
THT2114200	200cm	3	6901921142005



HIGH IMPACT MAGNETIC LEVELS

- Heavy duty aluminium frame.
- 6mm taller than other levels.
- Comfortable hand grips, ideal for carrying & vertical levelling.
- Machined on bottom surface for maximum accuracy.
- Shock proof and UV Protected high visible vials.
- Shock absorbing end caps to protect the accuracy of level if accidentally dropped.
- Accuracy +/- 0.5mm/m
- One Level, One plumb vial and one 180 degree rotating vial for wide range of jobs.



SKU	Size	Vials	EAN
THT2112030	30cm	3	6901921120300
THT2112045	45cm	3	6901921120454
THT2112060	60cm	3	6901921120607
THT2112100	100cm	3	6901921121000
THT2112120	120cm	3	6901921121208



SINCE 1996

STANDARD MAGNETIC LEVELS

- Heavy duty aluminium frame.
- Machined on bottom surface for maximum accuracy.
- Shock proof and UV Protected high visible vials.
- Shock absorbing end caps to protect the accuracy of level if accidentally dropped.
- Accuracy +/- 1mm/m
- One Level and one plumb vial for wide range of jobs.
- Hang hole simplifies storage.



SKU	Size	Vials	EAN
THT2113030	30cm	2	6901921130309
THT2113045	45cm	2	6901921130453
THT2113060	60cm	2	6901921130606
THT2113100	100cm	3	6901921131009

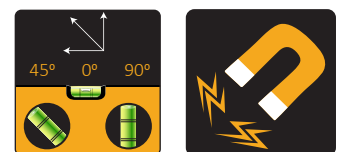


ABS TORPEDO LEVEL - MAGNETIC

- ABS case with aluminium rail.
- 3 Vials with top read window for easy viewing.
- Ideal for small installations.



SKU	Size	Vials	EAN
THT2113009	23cm	3	6901921130095

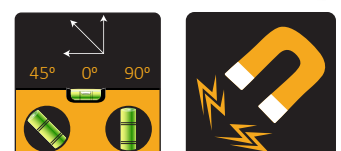


ALUMINIUM TORPEDO LEVEL - MAGNETIC

- Heavy duty aluminium frame.
- 1 Level, 1 plumb vial and 1 180 degree rotating vial for wide range of jobs.
- Ideal for small installations.



SKU	Size	Vials	EAN
THT2113019	23cm	3	6901921130194



SINCE 1996

CARPENTER'S STEEL SQUARE

- Lacquer coated for rust resistance.
- Embossed graduations for easy reading.

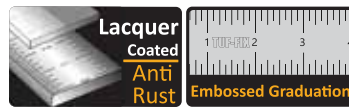
SKU	Size	EAN
THT2411300	300 x 200mm	6901924113008
THT2411600	300 x 600mm	6901924116003



TRY SQUARE - ALUMINIUM HANDLE

- Lacquer coated blade for rust resistance.
- Embossed graduations for easy reading.
- Triple riveted blade for strength and accuracy.

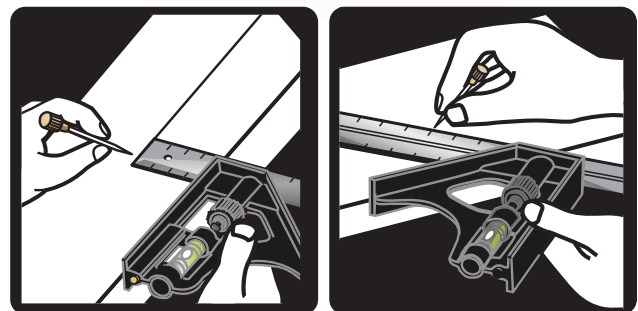
SKU	Size	EAN
THT2412006	6"/150mm	6901924120062
THT2412008	8"/200mm	6901924120086
THT2412010	10"/250mm	6901924120109
THT2412012	12"/300mm	6901924120123



COMBINATION SQUARE

- Metric and imperial graduation for ease of use.
- High visibility embossed graduation.
- Lacquer coated steel blade – rust resistant.
- Brass nut and scribe fittings for long life.
- Zinc alloy steel handle for tough jobs.
- Can be used as try and mitre square, depth, height gauge and spirit level.

SKU	Size	EAN
THT2415012	300mm	6901924150120

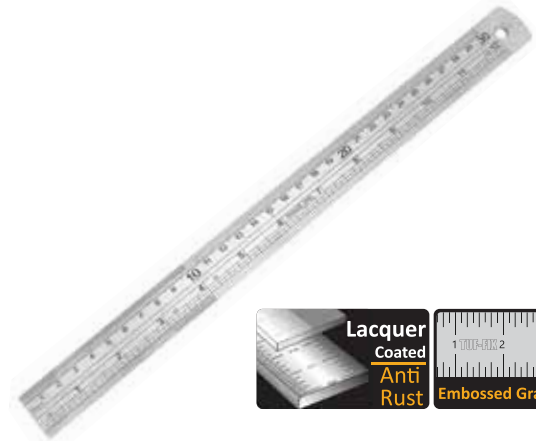


SINCE 1996

STEEL RULER

- Lacquer coated for rust resistance.
- Embossed graduations for easy reading.
- Endorsed conversion table.

SKU	Size	EAN
THT2310030	30cm	6901923100300
THT2310060	60Cm	6901923100607
THT2310100	100cm	6901923101000



CHALK LINE SET

- Sliding door for quick refill.
- 100ft string.
- ABS case for durability.
- Can be used vertically as a plumb bob.
- Stainless steel hook- does not rust.
- Crank folds into case for storage.
- Comes with blue color for interior and exterior use.

SKU	Description	EAN
THT2310003	30m/100ft Chalk line reel with bluepowder.	6901923100034



CHALK LINE POWDER

- Especially formulated for good adhesion.
- 115 grams.
- White for interior work.
- Red for exterior work.
- Blue for both interior and exterior work.
- Easy to pour.

SKU	Description	EAN
THT2311115	Blue -115 grams	6901923111153
THT2312115	Red - 115grams	6901923121152
THT2313115	White - 115 grams	6901923131151



SINCE 1996

RETRACTABLE UTILITY KNIFE

- Heavy duty zinc alloy body.
- 3 blade positions.
- Inside blade storage.
- Supplied with 1 SK5 blade

SKU	Size	EAN
THT1210099	152mm	6901912100991



SELF RETRACTING - SAFETY UTILITY KNIFE

- Heavy duty zinc alloy body.
- Self retracting safety knife.
- TPR grips for perfect hand grip.
- Inside blade storage.
- Supplied with 1 SK5 blade

SKU	Size	EAN
THT1210199	152mm	6901912101998



UTILITY KNIFE BLADES

- Razor-sharp SK5 blade.
- 62mm, Heavy duty, general purpose blade.
- Fits all type of utility knives.
- Available in pack of 10pcs and 100pcs as bulk with dispenser.
- Ideal for carpet, vinyl and other materials requiring stronger blade.

SKU	Description	EAN
THT1225010	62mm, Pack of 10pcs	6901912250108
THT1225100	62mm, Dispenser of 100pcs	6901912251006



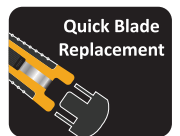
SINCE 1996

SNAP-OFF KNIFES

- ABS strong body.
- TPR grip for comfort.
- Strong steel blade barrel for long life.
- Auto quick lock push button.
- Included one blade.
- Blade snapper included in handle for safe and easy snap off.



SKU	Size	EAN
THT1215109	9mm	6901912151092
THT1215018	18mm	6901912150187



SAFETY SNAP-OFF KNIFE

- Zinc alloy heavy duty textured construction for slip-resistant in rough environments.
- TPR grip for comfort.
- Strong steel blade barrel for long life.
- Dual- auto quick lock push and self-retracting button.
- Included one blade.
- Blade snapper included in handle for safe and easy snap off.



SKU	Size	EAN
THT1215118	18mm	6901912151184



POCKET SNAP-OFF KNIFE

- Slim design for ease of control.
- Strong metal construction for durability.
- Pocket clip- portable and easy to store.
- Auto quick lock push button.
- Included one blade.
- Blade snapper included in handle for safe and easy snap off.



SKU	Size	EAN
THT1215009	9mm	6901912150095



SINCE 1996

SNAP-OFF KNIFE BLADES

- Razor-sharp SK5 blade.
- Spare blade dispenser.
- Thickness 0.55mm.
- 7 breakable segments.



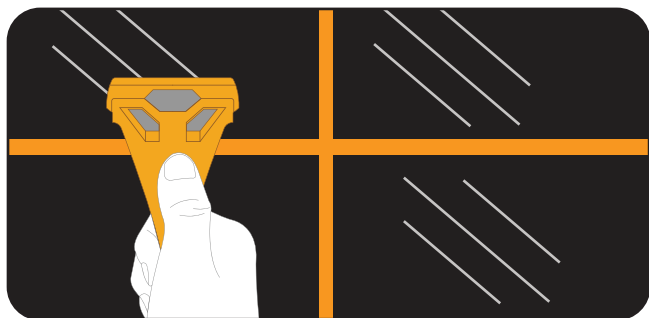
SKU	Size & Description	EAN
THT12301810	18mm, Dispenser of 10pcs	6901912301817

WINDOW SCRAPER

- ABS
- Supplied with one razor-sharp SK5 blade.
- Ideal for scraping paint from windows, mirrors, tiles and other flat surfaces



SKU	Size & Description	EAN
THT2610010	W:60mm, L:170mm	6901926100109



TPR GRIP CHISELS

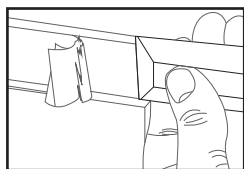
- Cr-V, forged high carbon steel blade.
- HRC 57-62° edge hardness.
- Full length blade- more hones.
- Lacquered coated blade for rust resistant.
- Supplied with blade guard for storage safety.
- Pre-shapped blade , ready for immediate use.
- TPR grip - for maximum grip and control.

SKU	Size	EAN
THT2710006	6mm - 1/4"	6901927100061
THT2710010	10mm - 3/8"	6901927100108
THT2710012	12mm - 1/2"	6901927100122
THT2710018	18mm - 3/4"	6901927100184
THT2710025	25mm - 1"	6901927100252
THT2710032	32mm - 1-1/4"	6901927100320
THT2710038	38mm - 1-1/2"	6901927100382
THT2710050	50mm - 2"	6901927100504

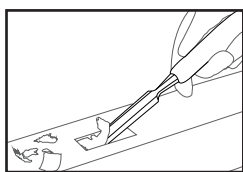


Set of 8pcs:

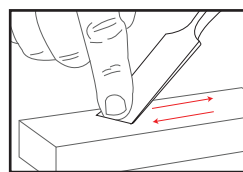
SKU	Size	EAN
THT2711004	6mm, 12mm, 18mm, 25mm (1/4", 1/2", 3/4, 1")	6901927110046



Pairing



Chopping



Sharpening
Bevel

SINCE 1996

TPR GRIP SCREWDRIVERS

- Chrome plated Cr-V shank
- HRC 52-54
- Fully hardened and tempered.
- Magnetic tip for easy pick up for screws.
- TPR handle for comfort, more torque and reduced slippage.
- Built-in hang hole for easy storage.



Slotted:

SKU	Size	EAN
THT3210675	6.5 x 75mm	6901932106751
THT3216100	6.5 x 100mm	6901932161002
THT3216125	6.5 x 125mm	6901932161255
THT3216150	6.5 x 150mm	6901932161507
THT3216200	6.5 x 200mm	6901932162009
THT3216250	6.5 x 250mm	6901932162504
THT3216300	6.5 x 300mm	6901932163006
THT3218200	8.0 x 200mm	6901932182007
THT3218250	8.0 x 250mm	6901932182502
THT3218300	8.0 x 300mm	6901932183004

Phillips:

SKU	Size	EAN
THT3240275	#2 x 75mm	6901932402754
THT3242100	#2 x 100mm	6901932421007
THT3242125	#2 x 125mm	6901932421250
THT3242150	#2 x 150mm	6901932421502
THT3242200	#2 x 200mm	6901932422004
THT3242250	#2 x 250mm	6901932422509
THT3242300	#2 x 300mm	6901932423001
THT3243200	#3 x 200mm	6901932432003
THT3243250	#3 x 250mm	6901932432508
THT3243300	#3 x 300mm	6901932433000

Screwdriver Set of 8pcs Slotted and Phillips:

SKU	Size	EAN
THT3268008	Phillips: 2x100, 2x125, 2x150, 2x150mm Slotted: 6.5x100, 6.5x125, 6.5x150, 6.5x200mm	6901932402754



ADJUSTABLE WRENCH

- Chrome plated Cr-V
- Knurled jaw adjustment screw.
- Polished head, protection against corrosion.
- Measurements scale marked on jaw allows size of fastener to be easily determined.
- 23 degree head angle for improved accessibility.
- TPR handle for comfort and improved grip.
- Built-in hang hole for easy storage.

SKU	Size	EAN
THT6810016	6"/150mm	6901968100167
THT6810018	8"/200mm	6901968100181
THT6810110	10"/250mm	6901968101102
THT6810112	12"/300mm	6901968101126



AVIATION SNIPS

Straight Cut:

- Titanium Nitride coated blades allows jaws to stay sharp for longer and allows for a longer working life.
- For straight, left and right cuts.
- Spring-loaded for self-opening action.
- S45 Heavy gauge steel handles for extra strength and to sustain maximum pressure.
- One handed auto release mechanism.
- Textures, soft and comfort handles for easier gripping and strong cutting pressure.
- Handy hang hole.

SKU	Size	EAN
THT1610012	250mm	6901916100126



CR-MO
TITANIUM
NITRIDE
COATED

HRC 56-62
TREATED BLADES
1.2mm
0.7mm



Left Cut:

- Titanium Nitride coated blades allows jaws to stay sharp for longer and allows for a longer working life.
- For left cuts.
- Spring-loaded for self-opening action.
- S45 Heavy gauge steel handles for extra strength and to sustain maximum pressure.
- One handed auto release mechanism.
- Textures, soft and comfort handles for easier gripping and strong cutting pressure.
- Handy hang hole.

SKU	Size	EAN
THT1610011	250mm	6901916100119



CR-MO
TITANIUM
NITRIDE
COATED

HRC 56-62
TREATED BLADES
1.2mm
0.7mm



Right Cut:

- Titanium Nitride coated blades allows jaws to stay sharp for longer and allows for a longer working life.
- For right cuts.
- Spring-loaded for self-opening action.
- S45 Heavy gauge steel handles for extra strength and to sustain maximum pressure.
- One handed auto release mechanism.
- Textures, soft and comfort handles for easier gripping and strong cutting pressure.
- Handy hang hole.

SKU	Size	EAN
THT1610013	250mm	6901916100133



CR-MO
TITANIUM
NITRIDE
COATED

HRC 56-62
TREATED BLADES
1.2mm
0.7mm



SINCE 1996

END CUTTERS

- Cr-V 60
- HRC 38- 3X longer life.
- Additionally hardened cutting edges.
- Cuts medium hard wire up to 3.3mm and hard wire up to 1.8mm.
- Slim and long form for tying in deep.
- Plastisol grips for comfort use.



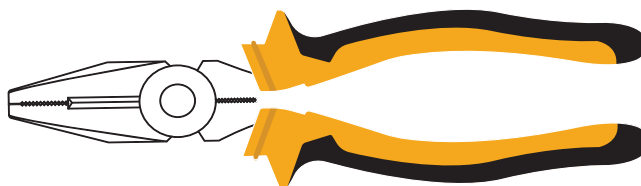
SKU	Size	EAN
THT6611150	6" - 150mm	6901966111509
THT6611200	8" - 200mm	6901966112001

CrV-MO HRC 38

PLIERS

Combination pliers:

- CrV 60- for long life.
- 50-60 HRC edge hardness.
- Full hardened body.
- Secure grip grooving.
- Comfort grip handles

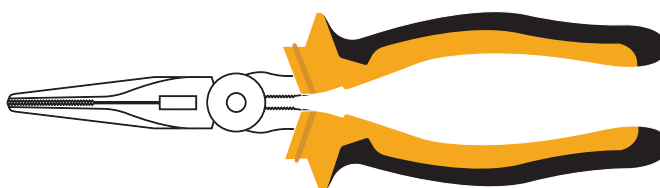


SKU	Size	EAN
THT6612200	8" - 200mm	6901966122000



Long nose pliers:

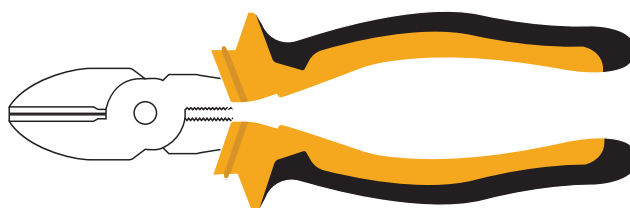
- CrV 60- for long life.
- 50-60 HRC edge hardness.
- Full hardened body.
- Secure grip grooving.
- Comfort grip handles



SKU	Size	EAN
THT6613200	8" - 200mm	69019966132009

Diagonal cutting pliers:

- CrV 60- for long life.
- 50-60 HRC edge hardness.
- Full hardened body.
- Secure grip grooving.
- Comfort grip handles.



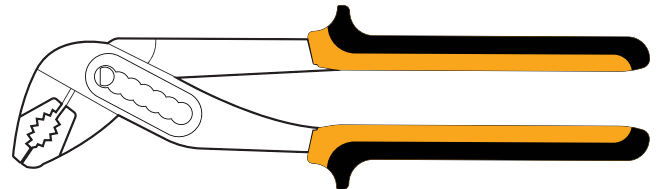
SKU	Size	EAN
THT6614200	8" - 200mm	69019966142008

SINCE 1996

WATER PUMP PLIERS

- CrV- for long life
- 7 positions with interposed hinge and double adjustment rack.
- Excellent behaviour during tightening and very good resistance to torsion.
- Secure grip grooving.
- Comfort grip handles

SKU	Size	EAN
THT6620250	10" - 250mm	6901966202504



GRIP PLIERS

- CrV- for long life.
- Ideal for precision work.
- Curved jaws puts tremendous pressure at any style or bolt.
- TPR hand grips for comfort.

SKU	Size	EAN
THT6625250	10" - 250mm	6901966252509



HAND RIVETER

- 20CR Jaw material with HRC57-63 hardness.
- 2.0mm A3 carbon steel body.
- Spring loaded handle ejects rivets stem.
- 4 interchangeable nozzles- 2.4 (3/32"), 3.2 (1/8"), 4.0 (5/32"), 4.8mm (3/16").
- Nozzle spanner included.
- Comfortable grip handle for better grip.

SKU	Size	EAN
THT7910001	10" - 250mm	6901979100019



HEAVY DUTY FOLDING RIVETER

- 20CR Jaw material for long life.
- Professional grade aluminium alloy body and handle.
- A3 carbon steel linkage system for improved mechanical advantage.
- 4 interchangeable nozzles up to 6.4mm.
- Safety lock feature in handle.

SKU	Size	EAN
THT7911001	32"	6901979110018



SINCE 1996

CLAW HAMMERS

Wooden Handle:

- Octagonal head.
- Induction hardened head, drop forged.
- Wooden Handle.

SKU	Size	EAN
THT7310016	16oz - 450grams	6901973100169
THT7310024	24oz - 675grams	6901973100244

Fiberglass Handle:

- Octagonal head.
- Induction hardened head, drop forged.
- Fiberglass shaft with polypropylrne outer jacket.
- Ergonomic comfort grip.

SKU	Size	EAN
THT7310116	16oz - 450grams	6901973101166
THT7310124	24oz - 675grams	6901973101241

Steel Handle:

- Octagonal head.
- Induction hardened head, drop forged.
- Hardened and tempered tubular steel shaft for strength.
- Flock- filled rubber grip for comfort and durability.

SKU	Size	EAN
THT7310216	16oz - 450grams	6901973102163



MACHINIST HAMMERS

- DIN1041
- Induction hardened head, drop forged.
- Fiberglass shaft with polypropylrne outer jacket.
- Ergonomic comfort grip.

SKU	Size	EAN
THT73180300	300 grams	6901973180307
THT73180500	500 grams	6901973180505
THT73180800	800 grams	6901973180802
THT73181000	1000 grams	6901973181007
THT73181500	1500 grams	6901973181502



**DIN
1041**

CHIPPING HAMMERS

Fiberglass Handle:

- Induction hardened head, drop forged.
- Fiberglass shaft with polypropylrne outer jacket.
- Ergonomic comfort grip.

SKU	Size	EAN
THT7319500	500grams	6901973195004



Wire Spring Handle:

- Hardened steel head for tough slag and spatter removal.
- Ergonomic handle design for vibration dampening.
- Hook for pegboard hanging.

SKU	Size	EAN
THT7322500	500grams	6901973225008



BALL PEIN HAMMERS

- Induction hardened head, drop forged.
- Fiberglass shaft with polypropylrne outer jacket.
- Ball end for riveting and poll for striking.
- Ergonomic comfort grip.

SKU	Size	EAN
THT7315008	8oz - 225grams	6901973150089
THT7315012	12oz - 300grams	6901973150126
THT7315016	16oz - 500grams	6901973150164
THT7315024	24oz - 700grams	6901973150249
THT7315032	32oz - 1000grams	6901973150324



SINCE 1996

SLEDGE HAMMER

- Induction hardened head, drop forged.
- Matt black painted head.
- Fiberglass shaft with polypropylrne outer jacket.
- Ergonomic comfort grip.

SKU	Size	EAN
THT7320002	2 LBS	6901973200029
THT7320003	3 LBS	6901973200036
THT7320004	4 LBS	6901973200043
THT7320006	6 LBS	6901973200067
THT7320008	8 LBS	6901973200081
THT7320010	10 LBS	6901973200104



RUBBER MALLETS

- Rubber moulded head.
- Fiberglass shaft with polypropylrne outer jacket.
- Ergonomic comfort grip.
- For use on soft surfaces such as tiles, furniture surfaces and wooden floors.


SKU	Size	EAN
THT7321016	16oz - 450grams	6901973210165
THT7321024	24oz - 675grams	6901973210240



5 TRAY METAL TOOL BOX

- 3 Layers or 5 tray.
- Powder coated for long life.
- With 2 handles for 100% access.
- Can be padlocked.



SKU	Description	EAN 
THT8810021	21" - Heavy Duty	6901988100215
THT8820021	21" - Medium Duty	6901988200212

AUTHORIZED DISTRIBUTOR



TUF-FIX®
PROFESSIONAL

TUF-FIX, FRANCE

10 Rue de Penthièvre, 75008 Paris **France**.
Email : info@tuffix.com | Web : www.tuffix.com

THE PROMISE OF QUALITY, ECONOMY AND RELIABILITY